

# Ohio Medical's Push-To-Set™ Intermittent and Continuous Vacuum Regulators



# Ohio Medical Corporation's Push-To-Set™ (PTS) family of vacuum regulators come with our durable, time tested, quality design you have come to know.

**Clear markings**  
show what mode the unit is in

**Top mounted on/off switch**  
for ease of use

**Stat Set-Up**  
Intermittent mode starts in the "ON" cycle - No waiting

**Smaller, sleek design**  
for tight spaces

**Quietest**  
on the market

**Fully adjustable timing cycles**  
preset to 15 seconds On / 8 seconds OFF

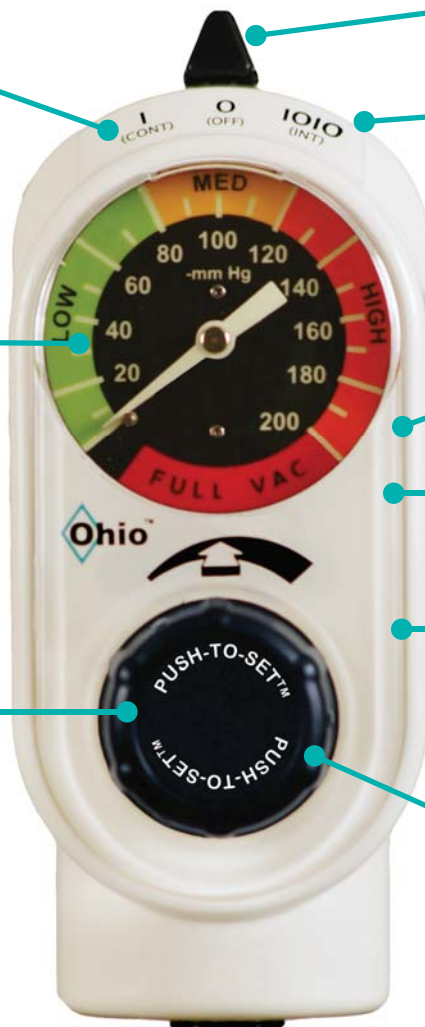
**Quick-To-Max**  
Only 2 turns from 0 to full wall vacuum



**Glow-in-the dark gauge**  
provides visibility in low-light situations



**Patented Push-To-Set™**  
Built-in feature eliminates the need to occlude patient tubing to set accurate vacuum levels



**Also available with a Digital Gauge**  
Large, easy to read display



**UNMATCHED ACCURACY!**  
for greater safety  
+/- 1% of full scale

# Did You Know?

Higher than recommended suction levels are frequently set for most common suctioning procedures.

**Fact:** If occlude-to-set is not performed, over-suctioning may occur\*

**Fact:** Higher than recommended suction levels may lead to tissue damage/bleeding\*

**Fact:** Tissue tears may lead to infection\*



Why PTS dramatically improves setting clinical vacuum settings

Patented Push-To-Set™ built-in feature eliminates the need to occlude patient tubing to set accurate vacuum levels



Removes a step in setting vacuum level, while ensuring greater patient safety

**One simple One-handed step**

\*Reference Neonatal Intensive Care, May-June 2008 Issue, Article: Enhancing the Safety of Medical Suction Through Innovative Technology, by Patricia Carroll, RN, BC, CEN, RRT, MS

# Push-To-Set™ Adult Intermittent Suction Regulators (ISU) (Analog or Digital)



8700-1251-900  
Adult



8700-1351-900  
Adult



## Technical Specifications

Safety Feature:	Push-To-Set™ Automatic occlusion device Quick-To-Max (2 turns to full wall vacuum) One hand to set vacuum level
Flow Rate:	Intermittent: Preset at 8 L/min per ASTM* Continuous: 0 to 80 L/min (without fittings at full increase)
Timing:	Easily adjustable without cover or gauge removal Silent ON/OFF switching Preset 15 seconds ON / 8 seconds OFF ( $\pm 3$ seconds) Front case adjustable at bedside Begins in the "ON" mode
Vacuum Range:	0 to 200 mmHg and full wall vacuum
Gauge Display:	Analog: Glow in the dark in low or no light environments Digital: Large, easy to read display with range indicators
Gauge Accuracy:	Analog: $\pm 10$ mmHg or $\pm 5\%$ Full Scale Deflection Digital: $\pm 2.0$ mmHg or $\pm 1\%$ Full Scale Deflection
Battery (Digital):	Primary Lithium: 2/3AA, 3.6V, 1.6 Ah

\*American Society for Testing & Materials



# Push-To-Set™ Pediatric/Neonatal Intermittent Suction Regulators (ISU) (Analog or Digital)



8700-1271-900  
Pediatric



8700-1371-900  
Pediatric



8700-1279-900  
Neonatal



8700-1372-900  
Neonatal



## Technical Specifications

Safety Feature:	Push-To-Set™ Automatic occlusion device Quick-To-Max (2 turns to full wall vacuum) One hand to set vacuum level Positive Pressure Safety Relief Valve
Flow Rate:	Intermittent: preset at 8 L/min per ASTM* Continuous: 0 to 80 L/min (without fittings at full increase)
Timing:	Easily adjustable without cover or gauge removal Silent ON/OFF switching Preset 15 seconds ON / 8 seconds OFF (± 3 seconds) Front case adjustable at bedside Begins in the "ON" mode
Vacuum Range:	0 to 135 mmHg (Pediatric) 0 to 100 mmHg (Neonatal)
Gauge Range:	0 to 160 mmHg Pediatric (Analog & Digital) 0 to 160 mmHg Neonatal (Analog) 0 to 100 mmHg Neonatal (Digital)
Gauge Display:	Analog: Glow in the dark in low or no light environments Digital: Large, easy to read display with range indicators
Gauge Accuracy:	Analog: ± 8 mmHg or ±5% Full Scale Deflection Digital: ± 1.6 mmHg or 1% of full scale deflection (Pediatric) ± 1.0 mmHg or 1% of full scale deflection (Neonatal)
Battery (Digital):	Primary Lithium: 2/3AA, 3.6V, 1.6 Ah

\*American Society for Testing & Materials

# Push-To-Set™ Adult Continuous Vacuum Regulator (CVR) (Analog or Digital)



8700-1224-900  
Adult



8700-1324-900  
Adult



8700-1226-900  
Adult



8700-1326-900  
Adult

## Standard Three Mode Continuous (Adult)

Modes: I (On), O (OFF), MAX

Gauge: Standard (0-200 mmHg - Full Vacuum)

Color Band: Low, Medium, High & Full Vacuum

Regulated Vacuum: 0-Full Wall Vacuum

Instantaneous Full Wall Vacuum Mode

## High Three Mode Continuous (Adult)

Modes: I (ON), O (OFF), MAX

Gauge: High Vacuum (0-760 mmHg)

Color Band: Solid orange/variable to orange

Regulated Vacuum: 0- Full Vacuum

Instantaneous Full Wall Vacuum Mode



8700-1225-900  
Adult



8700-1325-900  
Adult



8700-1330-900  
Adult



8700-1430-900  
Adult

## Standard Two Mode Continuous (Adult)

Modes: I (ON), O (OFF)

Gauge: Standard (0-200 mmHg-Full Vacuum)

Color Band: Low, Medium, High & Full Vacuum

Regulated Vacuum: 0-Full Wall Vacuum

## High Two Mode Continuous (Adult)

Modes: I (ON), O (OFF)

Gauge: High Vacuum (0-760 mmHg)

Color Band: Solid orange/variable to orange

Regulated Vacuum: 0-Full Wall Vacuum

# Push-To-Set™ Pediatric/Neonatal/C.A.S.S. Continuous Vacuum Regulator (CVR)(Analog or Digital)



8700-1231-900  
Neonatal

8700-1331-900  
Neonatal

8700-1227-900  
C.A.S.S.

8700-1234-900  
Pediatric

8700-1334-900  
Pediatric

## Two Mode Neonatal Continuous

Modes: I (ON), O (OFF)

Gauge: Low Vacuum  
(0-100 mmHg/Digital)  
(0-160 mmHg/Analog)

Color Band: Low, Medium, High

Regulated Vacuum: 0-100 mmHg

## Two Mode C.A.S.S. Continuous

Modes: I (ON), O (OFF)

Gauge: Low Vacuum  
(0-160 mmHg)

Color Band: Low, Medium, High

Regulated Vacuum: 0-140 mmHg

## Two Mode Pediatric Continuous

Modes: I (ON), O (OFF)

Gauge: Low Vacuum  
(0-160 mmHg)

Color Band: Low, Medium, High

Regulated Vacuum: 0-135 mmHg

## Technical Specifications

**Safety features:** Push-To-Set™ passive, safe vacuum level selection  
Quick to Max - 2 turns or less to full wall vacuum resuscitation  
One hand to set vacuum level correctly and safely  
Negative Pressure Safety Relief Valve (Neonatal, Pediatric & C.A.S.S. Models)



### Gauge Accuracy:

Analog:  $\pm 5\%$  full scale deflection  
Digital:  $\pm 1\%$  of full scale deflection or  
0-100 Gauge:  $\pm 1.0$  mmHg  
0-160 Gauge:  $\pm 1.6$  mmHg  
0-200 Gauge:  $\pm 2.0$  mmHg  
0-760 Gauge:  $\pm 7.6$  mmHg

**Vacuum Range:** 0-100 mmHg (Neonatal); 0-135 mmHg (Pediatric); 0-140 mmHg (C.A.S.S.);  
0-200 mmHg and up to full wall vacuum (Standard); 0-760 mmHg (High)

**Gauge Display:** Analog: Glow in the dark in low or no light environments  
Digital: Large, easy to read display

**Flow Rate:** Adult: 0-80 Lpm without fittings at full increase  
Neonatal/Pediatric/C.A.S.S.: 0-50 Lpm without fittings at full increase

**Battery:** Primary Lithium 2/3AA, 3.6V, 1.6 Ah



# Color Coding Labels

Color Code your Push-To-Set™ ISU or CVR Vacuum Regulators.

A solution for labeling your regulators to show department ownership or special clinical applications.

Can be used on either Analog or Digital Regulators



**Intermittent Suction Unit**



**Continuous Vacuum Regulator**



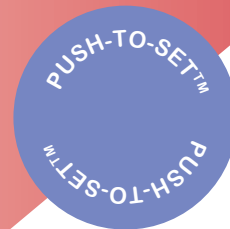
8700-0010-101  
GOLD  
(5 labels/order)



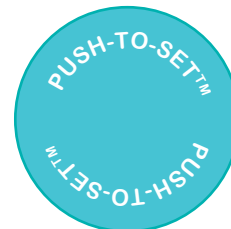
8700-0010-102  
PEACH  
(5 labels/order)



8700-0010-103  
WATERMELON  
(5 labels/order)



8700-0010-104  
PURPLE  
(5 labels/order)



8700-0010-105  
TEAL  
(5 labels/order)



8700-0010-106  
BLUE  
(5 labels/order)



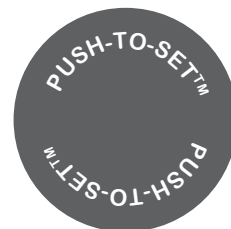
8700-0010-107  
LIGHT GRAY  
(5 labels/order)



8700-0010-108  
PINK  
(5 labels/order)



8700-0010-109  
LIME  
(5 labels/order)



8700-0010-110  
DARK GRAY  
(5 labels/order)



## Color Coding

Color Code your Push-To-Set™ Digital ISU or CVR Vacuum Regulators.  
A solution for labeling your regulators to show department ownership or special clinical applications.  
Color cases are only available with a digital gauge.



Blue



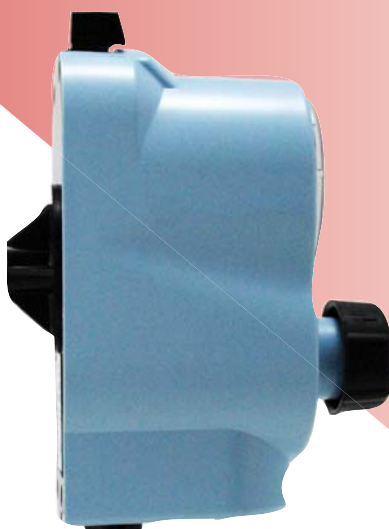
Yellow



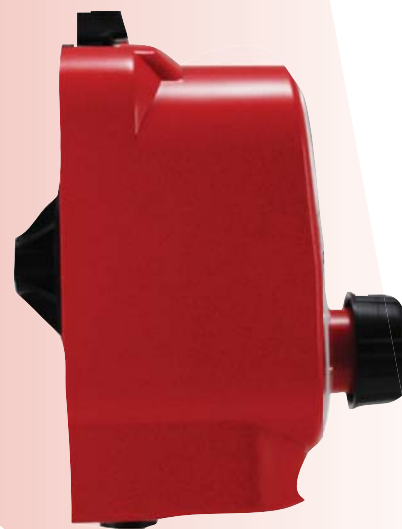
Purple



Pink



Lt. Blue



Red

Additional colors are available for an additional charge.  
Please contact inside sales at 866-549-6446, Option 1

# Ordering Matrix - Intermittent Suction Unit

**87 XX - XXXX - 9 XX**

**Push-To-Set™ Series**

**Adapter (vacuum source connection)**

No Adapter with 1/8" NPT Female	00
Diamond	01
DISS Hand-I-Twist (HIT)	02
DISS Nut & Gland	03
Schrader®	04
Chemetron® Rectangle Striker (NCG)	05
Puritan Bennett®	07
O.E.S. Twist	08
O.E.S. Med Star®	09
90° Tubing Nipple	11

**Fittings (patient connection)**

No Fitting 1/8" NPT Female	00
Tubing Nipple	01
Locking Gland	04
Locking Gland & Overflow Safety Trap	05
Trap	07
DISS Male	08
DISS Male & Overflow Safety Trap, DISS Wing Nut & Gland	28
Pole Mount Bracket with Locking Gland & Overflow Safety Trap	29
Pole Mount Bracket with Tubing Nipple	29

**Product Identifier Number**

Analog:

Intermittent Suction Unit	*1251
Pediatric Intermittent Suction Unit	1271
Neonatal Intermittent Suction Unit	1279

Digital:

Intermittent Suction Unit	1351
Pediatric Intermittent Suction Unit	1371
Neonatal Intermittent Suction Unit	1372

\*MR Conditional

Digital PTS Regulators	Yellow	Blue	Pink	Red	Lt. Blue	Purple
Intermittent Suction Unit	1451	1551	1651	1751	1851	1951
Intermittent Suction Unit/Pediatric	1471	1571	1671	1771	1871	1971
Intermittent Suction Unit/Neonatal	1472	1572	1672	1772	1872	1972

## Overflow Safety Traps and Filters

### Overflow Safety Traps



Overflow Safety Trap with Locking Gland  
6700-0365-901



Overflow Safety Trap with Hand-I-Twist (HIT)  
6702-0365-901




Overflow Safety Trap with DISS Wing Nut & Gland  
6703-0365-901



Overflow Safety Trap with DISS Male Adapter  
6714-0365-901


### Filters



Tubing x Tubing nipple

Package of 10  
Package of 50

6730-0571-800  
6730-0572-800

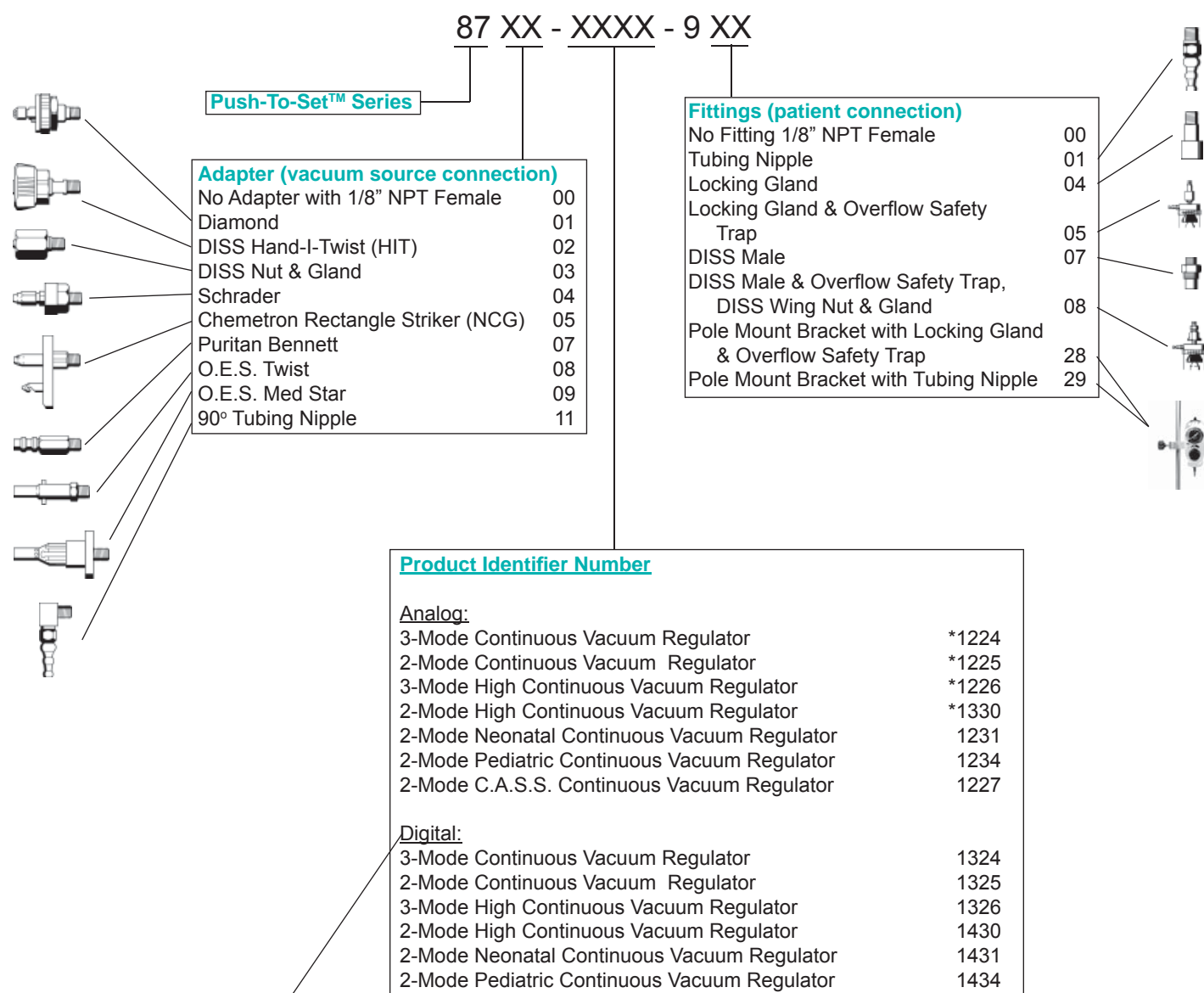


1/8" NPT Threaded x Tubing nipple

Package of 10  
Package of 50

6730-0581-800  
6730-0582-800

# Ordering Matrix - Continuous Vacuum Regulator



\*MR Conditional

Digital PTS Regulators	Yellow	Blue	Pink	Red	Lt. Blue	Purple
3-Mode Standard CVR	1424	1524	1624	1724	1824	1924
3-Mode High CVR	1426	1526	1626	1726	1826	1926
2-Mode Standard CVR	1425	1525	1625	1725	1825	1925
2-Mode High CVR	1530	1630	1730	1830	1930	2030
2-Mode Neonatal(0-100mmHg) CVR	1431	1531	1631	1731	1831	1931
2-Mode Pediatric (0-160mmHg) CVR	1434	1534	1634	1734	1834	1934



Medical Corporation®

always there | for life

Suction & Oxygen Therapy Devices ♦ Portable Suction Machines  
Medical Gas Pipeline Equipment ♦ Vacuum & Air Compressor Packages and Accessories

Ask about our clinical excellence program



**Avoiding the Hazards of Inadvertent Administration of High Suction Pressures**

Doug Pursely M.Ed., RRT  
Dan Calahan MBA, BSRT, RRT  
Dennis Cook BSRT, RRT

Nasogastric Training  
Tracheal Training  
View Both

**Ohio** Medical Corporation®  
always there | for life

clinical excellence program

**Part 1:** Clinical Animation Video  
“Avoiding the hazards of inadvertent administration of high suction pressures”

**Part 2:** Clinical Video  
Understanding the Hazards of oversuctioning

Both videos can be viewed on our website: [www.ohiomedical.com](http://www.ohiomedical.com)

Vacuum Regulators - Quick Reference Chart				
Type of Regulator	Model Type	Adult	Pediatric	Neonatal
Push-To-Set™ Intermittent Suction Unit (Analog)		X	X	X
Push-To-Set™ Continuous Vacuum Regulator (Analog)		X	X	X
Push-To-Set™ Intermittent Suction Unit (Digital)		X	X	X
Push-To-Set™ Continuous Vacuum Regulator (Digital)		X	X	X
Intermittent Suction Unit (Analog)		X	X	
Continuous Vacuum Regulator (Analog)		X	X	
Thoracic Vacuum Regulator (Analog)		X		
Surgical/Free-Flow Vacuum Regulator (Analog)		X		

© 2012 Ohio Medical Corporation.

This document contains information that is proprietary and confidential to Ohio Medical Corporation. Use of this information is under license from Ohio Medical Corporation. Any use other than that authorized by Ohio Medical Corporation is prohibited.

Ohio Medical Corporation and the Ohio Medical Corporation logo are registered trademarks and Push-To-Set is a trademark of Ohio Medical Corporation.  
U.S. Patent #6,623,463 (Push-To-Set™ Vacuum System)

Puritan Bennett is a registered trademark of Nellcor Puritan Bennett LLC.  
Schrader is a registered trademark of Schrader-Bridgeport International, Inc.  
Chemetron and Med star are registered trademarks of Allied Healthcare Products, Inc.

Ohio Medical Corporation, 1111 Lakeside Drive, Gurnee, IL 60031  
Toll free: 866-549-6446 or 847-855-0800 - Fax: 847-855-6218  
[www.ohiomedical.com](http://www.ohiomedical.com)  
P/N 255419 (Rev.6) 09/2012